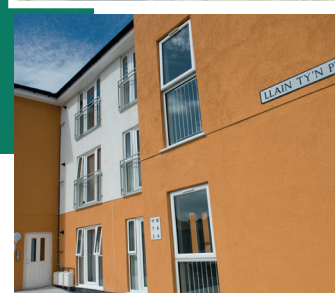


Ynys Môn THE ISLE OF Anglesey

A VISION FOR 2025



A thematic framework to realise the IACC's legacy aspirations
September 2017

www.anglesey.gov.uk

www.ynysmon.gov.uk



CYNGOR SIR

COUNTY COUNCIL

VISION FOR 2025



FOREWORD

Over the next few years, the Isle of Anglesey is expected to host a series of major projects. These complex, large-scale, high value infrastructure projects, some of which will be of national significance, are likely to create a number of positive benefits for, as well have negative impacts on, Anglesey for a number of years.

To reflect its commitment to responsible and proactive community leadership, the County Council expects all major projects to deliver a positive “legacy” for Anglesey. We expect the development, construction and operation of these major projects to contribute to the well-being and long-term future of the Island and its communities. This means that they must deliver positive impacts that benefit the Island’s current and future generations, for decades to come.

This legacy framework has been prepared to outline to developers the County Council's aspirations of their respective major projects. It aims to provide a thematic representation of what the Island could look like in 2025 if our long-term aspirations, and those of partners, are realised and achieved.

The County Council expects these major projects to help shape, support and strengthen the Island’s social, economic, environmental and cultural qualities and attributes. The framework focuses upon the following key legacy objectives:

- a) Creating a thriving and prosperous economy.
- b) Enabling residents to achieve their full potential.
- c) Ensuring residents are healthy, safe and equal.
- d) Protecting and enhancing the natural and built environment.
- e) Maintaining the language and culture.

We intend to use the framework to engage with, and influence developers, to ensure they recognise and integrate the need for meaningful legacy benefits into the development, construction and operation of their projects. The County Council expects developers to use this framework to inform their future decision-making, as well as providing a mechanism to help them deliver their respective corporate social responsibilities.



Councillor Llinos Medi
Leader

CONTENTS

Foreword

1. Introduction
2. The Scale of Opportunities
3. Legacy - Definition and Aspirations
4. A Summary of Anglesey's Socio-Economic Needs
5. Angleseys 2025 Legacy Objectives

Annex A - Well-being and Future Generations Act

Annex B – Legacy Logic Chains



INTRODUCTION

The siting of possible major projects on Anglesey provides a unique and unprecedented opportunity to contribute positively towards the socio-economic transformation of the Island and the wider North Wales region.

There are currently a number of private sector developers proposing to construct a series of major projects on Anglesey (including projects of national significance). These major projects (see overleaf) are large scale, complex developments that have the potential to bring significant benefits and impacts to Anglesey and its communities for a number of years.

The Isle of Anglesey County Council (IACC) sees the development, operation and legacy of these major projects, and their associated developments, as a key contributory factor in transforming the long term sustainability, wellbeing and 'sense of place' of the Island and its communities. In this context, it is imperative that the projects are developed, constructed and operated in a coordinated, integrated and informed manner to maximise socio-economic benefits, safeguard the Island's economy and culture and avoid any possible adverse effects.

Successful legacy development can make a significant contribution to building a society on Anglesey that is more confident, more equal, better skilled and more resilient. It will also allow the Council to support people when they need it most and equip services to respond to challenges, such as an ageing population, a changing climate and the development of new technologies. Some of the issues faced can only be tackled through new ways of working and developing the principle of resilient, Council supported, communities which reinforce and build on what people and communities are doing for themselves.

The framework has not been prepared in isolation. It has been prepared to address the following:

- Alignment with the aims and strategic priorities of the [County Council's Corporate Plan](#) to:
 - ▶ Improve the economic, social, environmental and cultural well-being of the Island by taking account of the long term and consistently preventing problems.
 - ▶ Deliver the reforms needed to ensure that public services are resilient and meet future needs.
 - ▶ Deliver education improvement that changes lives and drives economic growth.
 - ▶ Ensure economic interventions that deliver greater financial security for businesses and individuals.
 - ▶ Develop a social model of health and social care that matches local needs and services.
 - ▶ Using digital technology to improve the delivery of services.



- Complementing the Joint Local Development Plan (JLDP) and the New Nuclear Build at Wylfa Supplementary Planning Guidance (NNB SPG). The JLDP outlines the land use and development strategy, objectives and policies for the Anglesey and Gwynedd Planning Authority areas until 2026; whilst the NNB SPG outlines the IACC's vision and objectives for the New Nuclear Build, and provides advice on important local direct or indirect matters to help inform the project promoter's proposals and decision making.
- Responding to the Well-being of Future Generations Act ([see Annex A for a summary of the Act's seven well-being goals; five ways of working and fourteen well-being objectives](#)) and specifically recognising the need to
 - ▶ Address the long term impacts of potential developments.
 - ▶ Work in partnership with its communities and stakeholders.
 - ▶ Develop a more co-ordinated approach to service delivery to create a more prosperous, healthy and vibrant community.



THE SCALE OF OPPORTUNITIES

Anglesey is expected to attract unprecedented inward investment over the next decade through the following proposed major projects (and their associated developments):

- Horizon Nuclear Power's nuclear new build at Wylfa which could generate 2,700MW of electricity from two Advanced Boiling Water Reactors in the first half of the 2020s, creating 850 permanent jobs once operational (<http://www.horizonnuclearpower.com>).
- Orthios Eco Park and Energy Centre in Holyhead will be a regenerative development, utilising the former Anglesey Aluminium site to develop opportunities in energy, on-land fish farming, hydroponic food production, jetty facilities and logistics (<http://www.orthios.com>).
- Land & Lakes' leisure village at Penrhos Coastal Park, Holyhead consisting of high quality visitor accommodation and supporting facilities (<http://www.landandlakes.co.uk>)
- Minesto's proposed installation of a 10MW marine energy (with plans now to increase to 80MW) array off the coast of Holyhead with the potential to supply electricity to 8000 households (<http://minesto.com>).
- The Morlais Marine Energy (West Anglesey) Demonstration Zone which has been identified by the Crown Estate as being a suitable location (primarily for its tidal conditions but also access to infrastructure) for the installation of marine energy devices to encourage and accelerate technology development (<http://morlaisenergy.com>).
- The Menai Science Parc (M-SParc) in Gaerwen will provide 5000 sq meters of business support facilities and services, including office and workshop space and laboratories where collaboration will be encouraged. It is Wales' first designated Science Park (<http://www.m-sparc.com>).
- An expansion to Coleg Menai's Llangefni campus to include improved engineering, technology and energy facilities in light of the employment opportunities associated with the energy sector on Anglesey.



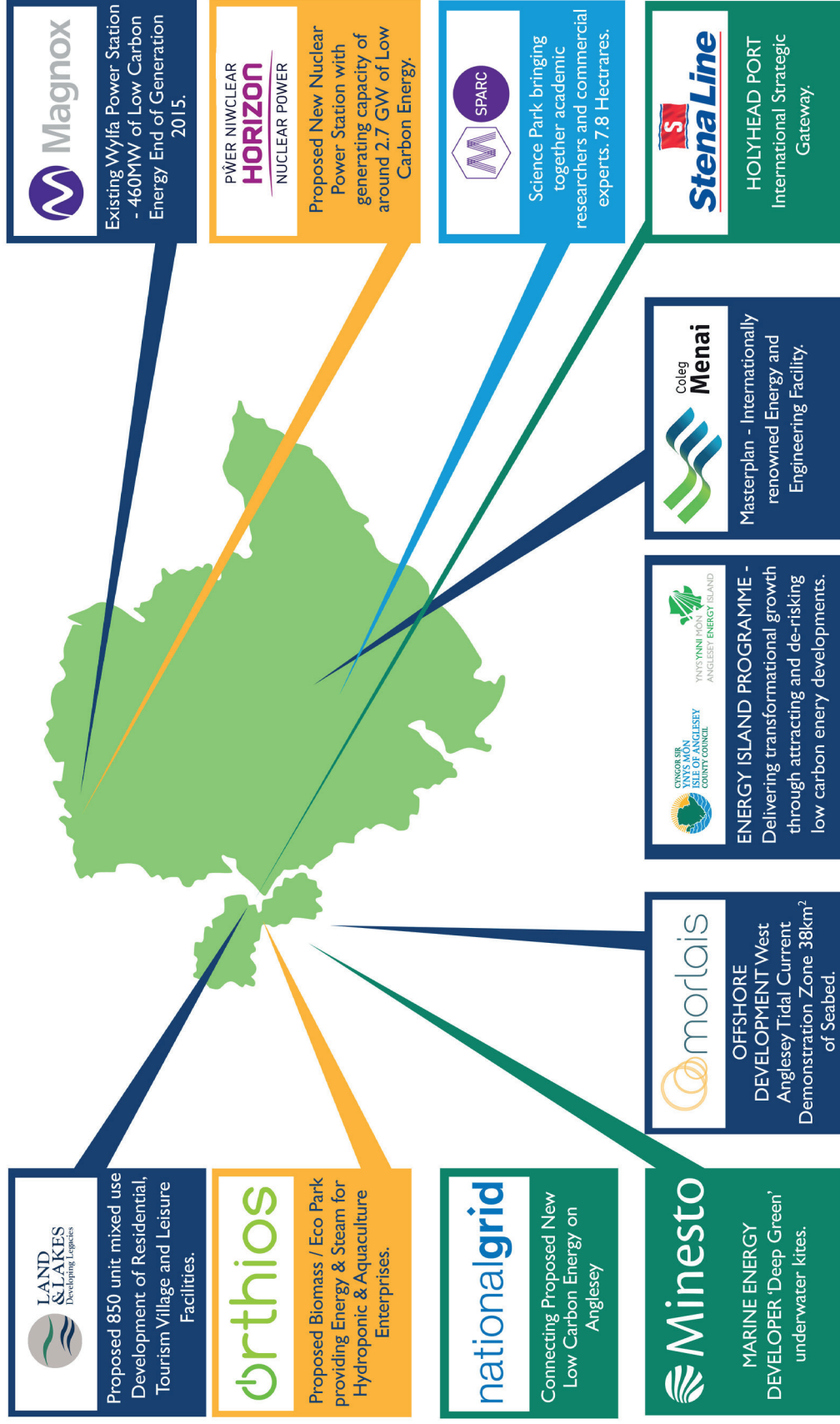
Proposed Energy Island Related Developments



CYNGOR SIR
YNYS MÔN
ISLE OF ANGLESEY
COUNTY COUNCIL



YNYS YNNI MÔN
ANGLESEY ENERGY ISLAND



LEGACY – DEFINITION AND ASPIRATIONS

For the purpose of this framework, 'legacy' means ensuring a positive impact for Anglesey and its communities, across a broad range of thematic issues, from the development, delivery and hosting of all proposed major projects. IACC is of the firm view that achieving a positive and all embracing 'legacy' is integral in order to maximise long-term benefits for the Island and its residents and mitigate any possible adverse impacts.

Given their scale, nature and significance, the major projects present a once in a lifetime opportunity to sustainably transform the social, economic and environmental fabric of Anglesey, and the County Council strongly believes that achieving a positive and all embracing 'legacy' is fundamental/ integral to their success and acceptability.

The IACC is eager to develop and maintain a positive and long-term relationship with all major project developers on Anglesey, and we are committed to applying a strategic approach and mentality to the development, construction and operation of the projects in order to maximise long term benefits for the Island and its residents, as well as avoiding and mitigating against adverse impacts.

Legacy can relate to the spatial impacts of the proposed major projects and what Anglesey will look like post construction - including the location and purpose of all associated developments; and what additional facilities and resources will be required to service these sites.

Legacy benefits should not be limited to monetary terms and value and should consider the following.

- Spatial impacts of the proposed major projects and the need to ensure that all developments are constructed in the right locations for the Island and its communities, in the short and long term.
- Providing future employment for the Island's residents; ensuring local businesses can capitalise upon supply chain opportunities; improving or developing new community facilities and enhancing Anglesey's infrastructure.
- Improving health, well-being, quality of life and the Island's natural environment, as well as supporting and strengthening the Welsh language and culture.

The IACC considers the whole of the Island to be a host community for the proposed major projects, and it is at this spatial scale that the County Council believes that the greatest transformational benefits will be realised and experienced. The County Council also recognises that the realisation of any legacy benefits (as well any project avoidance, mitigation and compensation measures) should also reflect the potential localised impacts (i.e. a proximity principle) of the proposed major projects (e.g. communities around the location of the proposed new nuclear power station and its associated developments).

The anticipated, possible cumulative outcomes of the major projects include the following.

- Improved social well-being as a result of improved quality employment and training opportunities; increased prosperity and economic growth.
- The attraction of inward investment and the expansion of existing and new local and regional businesses (including those linked to potential supply chain opportunities).
- Land use changes.
- Improved connectivity as a result of the development of reliable and effective infrastructure.
- A mix of new housing, with a proportion available to those on low incomes.
- An increase in community pride and self-esteem, along with cultural development and enhanced community cohesion.

A SUMMARY OF ANGLESEY'S SOCIO-ECONOMIC NEEDS

Evidence of Anglesey's socio-economic needs has been collated in order to demonstrate the critical importance of all major projects having a transformational, long term and positive impact on Anglesey and its communities.

Anglesey has long suffered from a fragile, peripheral and declining economy, with significant pockets of socio-economic deprivation, which has resulted in:

- Declining levels of GVA (52.9% of the national UK average).
- Low levels of GVA per head (£13,411 compared to UK's £25,341).
- High levels of youth unemployment (17.7% of 16-24 year olds).
- High levels of economic inactivity (20.7% of the working age population).
- High levels of youth out-migration and an ageing local population.
- A high percentage of the working population receiving incapacity benefits (6.8% compared to UK's 6.3%).
- A continued low level of new business formation (6.5% in comparison to the Welsh rate of 7.8%).
- An over reliance on public sector employment opportunities.
- Significant numbers of children living in poverty (19.5%).
- A high prevalence of health inequalities.
- High levels of private households living in fuel poverty (34.9%).

Variations in the number of people who speak Welsh in the communities on Anglesey (with over 70% located in the centrally located communities whilst the coastal communities have only 40% Welsh speakers).

Despite these significant challenges, there exists a series of key factors, attributes and assets which combine to create a clear and definitive aspiration and ambition for Anglesey (quite unique from those expressed in other areas - both regionally and nationally). These include:

- The number and variety of proposed major projects looking to capitalise upon a wide range of low carbon energy sources (including nuclear, tidal, biomass and solar) providing significant opportunities to deliver tangible economic, social and environmental benefits.
- Anglesey has a proud and rich heritage, tradition and awareness of safe energy generation.
- The scale of proposed major projects acting as a magnet for further private sector investment into Anglesey.
- A committed programme of improvements to economic infrastructure to enhance the Island's accessibility and connectivity; support and facilitate opportunities for jobs and growth; and attract additional investment and regeneration.

- Positive and supportive communities and businesses looking to prosper, thrive and succeed –with the majority demonstrating a positive attitude to the proposed major projects.
- The recognition and understanding of developers of the need to ensure their projects have a positive, long term impact on Anglesey and its communities.
- A strong and distinctive cultural identity and heritage directly linked to the Island's geography and rurality.
- A high quality natural, built and historic environment that underpins and supports the Island's popularity and appeal as a tourism destination.

The above legacy aspirations outline the County Council's commitment to securing transformational change through ambitious, creative, yet pragmatic and responsible community leadership. The framework is a thematic representation of what Anglesey could look like in 2025 if the long term aspirations of the IACC and partners are realised and achieved. It will be used to underpin and influence engagement and collaboration with developers, the Island's communities and partner organisations; as well as informing the County Council's approach to prioritisation and resource management.

The framework will be of importance to demonstrate effectively to developers of the need to acknowledge, incorporate and integrate legacy benefits (and their potential scope) from the outset of their project development activities. It will be integral to informing and influencing their future decision making to ensure an appropriate balance is achieved between commercial demands and community expectations; whilst assisting them to deliver their range of Corporate Social Responsibilities.

In order for the Island to become more vibrant, cohesive and resilient, it is imperative that developers fully support the communities from where they intend to operate. Developers should fully involve and integrate themselves into these communities in order to fulfil their responsibilities as conscientious and respectable corporate citizens.

The Council recognises that the proposed major projects could also have adverse impacts on the Island's communities, businesses and the environment. Wherever possible these will be identified and avoided, and when this not feasible, developers should implement appropriate mitigation and/ or compensation measures. This framework will provide clarity to developers on the type of mitigation and compensation measures the Council believes are realistic, deliverable and appropriate.



ANGLESEY'S 2025 LEGACY OBJECTIVES

The Council's legacy aspirations focus on the following thematic objectives:

- A) Creating a thriving and prosperous economy.
- B) Enabling residents to achieve their full potential.
- C) Ensuring residents are healthy, safe and equal.
- D) Protecting and enhancing the natural and built environment.
- E) Maintaining the language and culture.

A series of legacy logic chains ([Annex B](#)) have been prepared to demonstrate how the Council, in collaboration with partners, the major project developers and the Island's communities, will facilitate the implementation of the legacy framework. The activities listed below have been replicated from the logic chains.

These activities will be in addition to, and fully complement, the County Council's various statutory responsibilities and duties which will still be delivered on an annual basis.



CREATING A THRIVING AND PROSPEROUS ECONOMY

- A confident Island that prides itself on its strong economy, providing employment opportunities for all
- An Island recognised globally for the scale and diversity of its energy research, development, production and servicing
- A hub for sustainable businesses that support a prosperous, low carbon society and encourage innovation and entrepreneurship
- A well-connected place with robust transport infrastructure
- An Island that continues to attract a diverse range of visitors

Activities

- Attracting major developers to invest in Anglesey to facilitate the Island's transformation
- Developing a new Education Strategy and Employment, Skills and Training Programme to ensure the Island's young people and adults are equipped with the skills to capitalise upon future opportunities
- Improving the Island's employment sites and premises to attract and facilitate economic investment
- Improve infrastructure capacity and resilience to meet the needs of communities, businesses and visitors
- Work in partnership working with the North Wales Economic Ambition Board to deliver sustainable economic and employment growth
- Developing a tackling-poverty programme

Outcomes

- Increased GVA
- Improved job opportunities, closer to home
- Increased job diversification and opportunities
- More young local people contributing to the economy
- Young people and citizens have the skills and experiences needed to thrive and prosper
- Education standards above Free School Meal national benchmarks
- Improvement in quality of life and well-being
- Decrease in number of work less households
- Improved childcare to remove barriers to secure employment

Well-being of Future Generations Checklist				
Goals:				
Prosperous		Resilient	<input type="radio"/>	Healthier
More Equal	<input type="radio"/>	Cohesive	<input type="radio"/>	Globally Responsible

Ways of Working:							
Integrate	<input type="radio"/>	Prevention	<input type="radio"/>	Collaborate	<input type="radio"/>	Involve	Long Term

Objectives:			
Give every child the best start in life	<input type="radio"/>	Support safe, cohesive and resilient communities	<input type="radio"/>
Improve prosperity for all - employment and jobs	<input type="radio"/>	Access to secure, safe, efficient and affordable homes	<input type="radio"/>
Support low carbon and climate resilient society	<input type="radio"/>	Sustainable economic development and employment	<input type="radio"/>
Sustainable and resilient infrastructure	<input type="radio"/>	Wales - an ambitious country connected to the wider world	<input type="radio"/>

ENABLING RESIDENTS TO ACHIEVE THEIR FULL POTENTIAL

- A place where opportunities exist for young people to remain on the Island to live and work
- A well-educated and highly skilled population
- A place where communities and individuals can maintain and develop their independence
- A place where people choose to live and thrive
- An Island that projects a positive image regionally, nationally and internationally

Activities:

- Continue with the school modernisation programme
- Reshape Welsh teaching in our schools to enable young people to utilise their Welsh language skills in wider society
- Ensure that young people have the necessary skills to capitalise upon future opportunities
- Enhanced apprenticeship opportunities to provide young people and adults with appropriate skills and competencies
- Invest in information technology infrastructure to improve digital connectivity
- Bring empty homes back into use and increase the supply of affordable and good quality social housing
- Support families and parents to reduce adverse childhood experiences that can have lifelong effects
- Community Learning Centres providing extended services with childcare, parenting support, family learning and community access to facilities built around the school day

Outcomes:

- Increased GVA
- More people in employment
- More residents achieving their full potential
- Improved educational attainment
- High quality all age apprenticeships
- Enhanced wellbeing and quality of life
- Children in care enjoying the same life chances as other children.
- Decrease in number of workless households
- Better balanced housing market
- Increased access to good quality, energy efficient, affordable social housing
- Improved number and range of housing for all.

Well-being of Future Generations Checklist					
Goals:					
Prosperous		Resilient	<input checked="" type="radio"/>	Healthier	
More Equal	<input checked="" type="radio"/>	Cohesive	<input checked="" type="radio"/>	Globally Responsible	<input checked="" type="radio"/>

Ways of Working:					
Integrate	<input checked="" type="radio"/>	Prevention		Collaborate	<input checked="" type="radio"/>
				Involve	
				Long Term	<input checked="" type="radio"/>

Objectives:			
Give every child the best start in life	<input checked="" type="radio"/>	Support safe, cohesive and resilient communities	<input checked="" type="radio"/>
Improved education outcomes for all background	<input checked="" type="radio"/>	Access to secure, safe, efficient and affordable homes	<input checked="" type="radio"/>
Learn and use Welsh - families, communities and workplace	<input checked="" type="radio"/>	Wales - an ambitious country connected to the wider world	<input checked="" type="radio"/>
Sustainable and resilient infrastructure		Sustainable economic development and employment	

ENSURING RESIDENTS ARE HEALTHY, SAFE AND EQUAL

- A safe, secure and attractive Island to live and work
- An Island with excellent community services and facilities, including high quality and modern schools, affordable housing and effective health provision
- A place where deprivation, inequality and social immobility have been reduced; and services meet the needs of vulnerable groups
- An Island where people actively participate in recreation, leisure and cultural activities

Activities:

- Improving the welfare of vulnerable children and adults to ensure they are safe, healthy and achieving their potential
- Provision of new housing and extra care facilities
- Adapting residential care facilities to be more dementia focused aligned to the new national dementia plan
- Enhancing intervention models to support the Island's children and parents.
- Strengthening links between education and leisure to improve attainment, health, well-being and life satisfaction
- Providing welfare benefits advice to support the Island's most vulnerable residents.
- Move more care and services from hospitals into communities, supported by integrated and sustainable Health and Care Services (inclusive of improved support for carers)
- Work with others to develop stronger support for mental illness
- Promote healthy lifestyles and choices through interventions on preventing ill health and encouraging more activity for general well-being throughout life
- Work with communities to protect local facilities that bring people together, including pubs, libraries, museums, arts centres and leisure centres

Outcomes:

- Improvements in physical and mental well-being
- Improved social mobility and independence
- Decrease in number of work-less households
- Decrease in childhood and adult obesity levels
- Reduction in anti-social behaviour
- Residents living life without safety concerns
- Reduction in loneliness and social isolation
- User led changes to County Council service provision
- Recognition of the vital contribution older people make to society
- The ageing population supported to stay well into later life
- Prevention of unnecessary closures of community assets with communities taking ownership of them where appropriate
- Increase in volunteering in local communities

Well-being of Future Generations Checklist					
Goals:					
Prosperous		Resilient	<input checked="" type="checkbox"/>	Healthier	
More Equal	<input checked="" type="checkbox"/>	Cohesive	<input checked="" type="checkbox"/>	Globally Responsible	<input checked="" type="checkbox"/>

Ways of Working:

Integrate	<input checked="" type="checkbox"/>	Prevention	<input checked="" type="checkbox"/>	Collaborate	<input checked="" type="checkbox"/>	Involve	<input checked="" type="checkbox"/>	Long Term	
-----------	-------------------------------------	------------	-------------------------------------	-------------	-------------------------------------	---------	-------------------------------------	-----------	--

Objectives:

Give every child the best start in life	<input checked="" type="checkbox"/>	Support safe, cohesive and resilient communities	<input checked="" type="checkbox"/>
Live healthy and independent lives	<input checked="" type="checkbox"/>	Promote and enhance the culture and heritage of Wales	<input checked="" type="checkbox"/>
Sustainable and resilient infrastructure	<input checked="" type="checkbox"/>	High quality, responsive and better integrated public services	<input checked="" type="checkbox"/>
		Wales - an ambitious country connected to the wider world	<input checked="" type="checkbox"/>

D

PROTECTING AND ENHANCING THE NATURAL AND BUILT ENVIRONMENT

- An Island that recognises the value and quality of its environment
- An Island with a rich and diverse natural environment that supports resilience
- A place where the natural and built environments are used sustainably
- An Island with a high quality public realm

Activities:

- Mitigate impacts (including cumulative) of major projects on the natural and built environment.
- Tackle the causes and effects of climate change to safeguard the long-term wellbeing of the Island's environment, economy and communities
- Improve waste recycling
- Support activities to reduce energy consumption and fuel poverty and improve energy efficiency.
- Work with others to promote environmental management and education to improve the sustainability resilience of the natural and built environment
- Capitalising on the potential of the Island's coastline to deliver socio-economic benefits
- Further our lead over other nations in recycling and minimising landfill
- Continue to invest in flood defence work and take further action to better manage water in our environment

Outcomes:

- A high quality, resilient natural and built environment
- Enhanced well-being and quality of life
- A cleaner and greener Anglesey
- Recycling of at least 70% of waste
- Reduced energy consumption within Island communities and Council facilities
- Increase in the socio-economic value of the environment
- A sustainable and prosperous tourism sector
- Reduction in households living in fuel poverty
- Increased access to good quality, energy efficient housing

Well-being of Future Generations Checklist					
Goals:					
Prosperous		Resilient	<input checked="" type="checkbox"/>	Healthier	
More Equal	<input checked="" type="checkbox"/>	Cohesive	<input checked="" type="checkbox"/>	Globally Responsible	

Ways of Working:					
Integrate	<input checked="" type="checkbox"/>	Prevention	<input checked="" type="checkbox"/>	Collaborate	<input checked="" type="checkbox"/>
			<input checked="" type="checkbox"/>	Involve	<input checked="" type="checkbox"/>
				Long Term	<input checked="" type="checkbox"/>

Objectives:			
Support low carbon and climate resilient society	<input checked="" type="checkbox"/>	Promote and enhance the culture and heritage of Wales	<input checked="" type="checkbox"/>
Sustainable and resilient infrastructure	<input checked="" type="checkbox"/>	Manage natural resources to support wellbeing	<input checked="" type="checkbox"/>
High quality, responsive and better integrated public services		Wales - an ambitious country connected to the wider world	<input checked="" type="checkbox"/>

MAINTAINING AND PROMOTING THE LANGUAGE AND CULTURE

- A place that celebrates its unique cultural and geographical identity and distinctiveness
- An Island that embraces and promotes its proud cultural heritage and the Welsh language

Activities:

- Implement, monitor and review the IACC's Welsh Language Strategy and the Welsh Education Plan
- Provide appropriate support and advice to Developers to promote bilingualism.
- Supporting the development of 'project specific' Welsh language schemes and acclimatisation activities
- Developing appropriate measures to mitigate against any negative impacts from the major projects
- Compliance with the Welsh Language Standards to promote and facilitate the use of the Welsh language

Outcomes:

- Strengthening of the Welsh language's status and vibrancy on Anglesey
- Strengthening of community cohesion and identity
- Improvement in quality of life and well-being

Well-being of Future Generations Checklist					
Goals:					
Prosperous		Resilient	<input checked="" type="radio"/>	Healthier	
More Equal	<input checked="" type="radio"/>	Cohesive	<input checked="" type="radio"/>	Globally Responsible	

Ways of Working:									
Integrate	<input checked="" type="radio"/>	Prevention	<input checked="" type="radio"/>	Collaborate		Involve	<input checked="" type="radio"/>	Long Term	<input checked="" type="radio"/>

Objectives:			
Give every child the best start in life	<input checked="" type="radio"/>	Support safe, cohesive and resilient communities	<input checked="" type="radio"/>
Live healthy and independent lives		Sustainable economic development and employment	<input checked="" type="radio"/>
Learn and use Welsh - families, communities and workplace	<input checked="" type="radio"/>	Promote and enhance the culture and heritage of Wales	<input checked="" type="radio"/>
		Wales - an ambitious country connected to the wider world	<input checked="" type="radio"/>

The legacy framework consists of a series of co-ordinated and prioritised activities that will need to be progressed, implemented and funded from a variety of sources. It is anticipated that the IACC's aspirations can be realised through capitalising upon; leveraging in or adding value to:

- IACC core funding.
- Welsh Government (such as the Anglesey Enterprise Zone) and other public sector funding.
- Any additional UK Government funding for communities/ sites hosting new nuclear power stations.
- European Union Structural Funds (subject to the conclusion of Brexit negotiations).
- Joint Ventures with major project developers.
- Section 106 statutory Planning Obligations.
- Voluntary Community Benefit Contributions from major project developers.

In order to ensure that the County Council's legacy aspirations can be achieved, it's imperative that this framework is:

- Related to the scope, location and anticipated benefits of the proposed major projects.
- Realistic, deliverable and affordable.
- Based on detailed evidence of need.
- Aligned with corporate and other local, regional and national policies.
- Able to attract 'external' funding to increase the scale of outcomes and/or enable their delivery to be accelerated.
- Capable of being measured, monitored and reviewed.



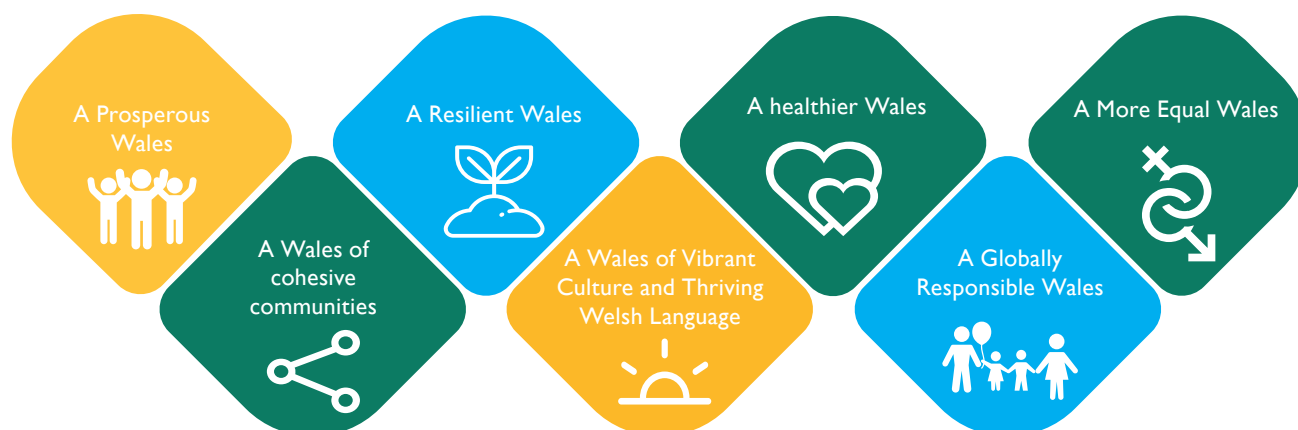
Annex A - Well-being and Future Generations Act

The underlying goals, ways of working and objectives of the Well-being and Future Generations Act underpins the Welsh Government's vision to develop Wales as a prosperous, resilient, healthier, more equal and globally responsible country with cohesive communities, a vibrant culture and a thriving Welsh language. Its successful implementation will result in a high quality, sustainable Public Service and a better and lasting quality of life for us all.

In Taking Wales Forward, the Welsh Government has set out the four areas where they can make the biggest difference to the lives of the people of Wales, now and in the future. These four areas - Prosperous and secure; Healthy and Active; Ambitious and Learning and United and Connected - incorporate the 7 well-being goals and the 5 ways of working. The associated 14 well-being objectives, which reflect the Welsh Government's aspirations for change over the long term, have been designed to reflect the key priorities for improvement in our economy, our society, our environment and our culture.



7 WELL BEING GOALS



5 WAYS OF WORKING



INTEGRATE: Consider how the Council's well-being objectives may impact on each of the well-being goals, on their other objectives or on the objectives of other public bodies.



PREVENTION: Acting to prevent problems occurring or getting worse to help the Council meet its objectives.



COLLABORATE: Work with any other person or organization that could help the Council to meet its well-being objectives.



INVOLVE: The importance of engaging with people who have an interest in the well-being goals and ensuring that they reflect the diversity of the area.



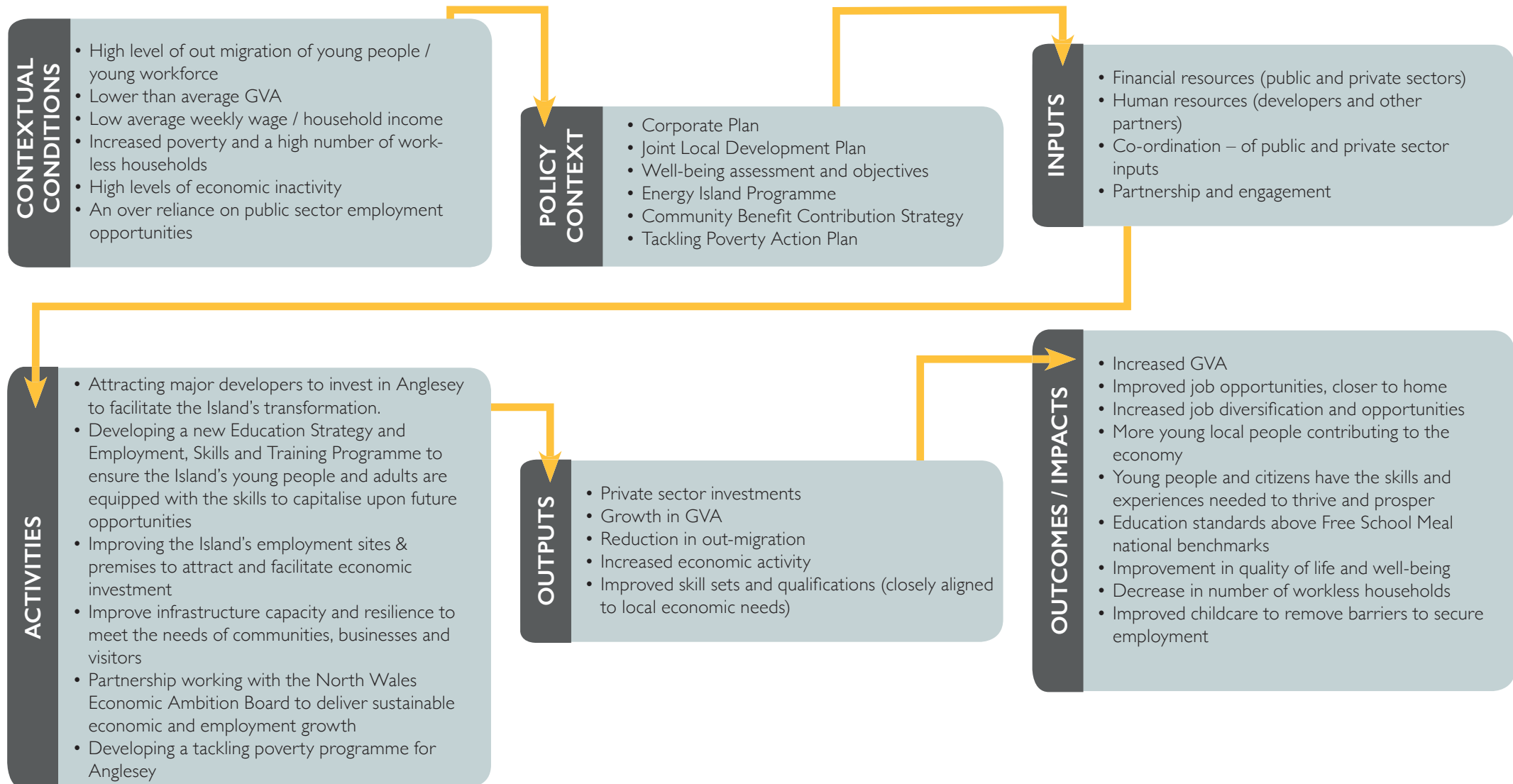
LONG TERM: The importance of balancing short-term needs with the need to safeguard the ability to also meet long-term needs.

14 WELL-BEING OBJECTIVES

1. Create the conditions to give every child the best start in life.
2. Improve education outcomes for all and reduce the gap in outcomes for different groups.
3. Help people live healthy and independent lives and support a healthy workforce.
4. Improve prosperity for all across Wales, helping people into employment and sustaining jobs.
5. Create the conditions for people to learn and use the Welsh language with their families, in their communities and in the workplace.
6. Support the transition to a low carbon and climate resilient society.
7. Connect communities through sustainable and resilient infrastructure.
8. Support safe, cohesive and resilient communities.
9. Improve access to secure, safe, efficient and affordable homes.
10. Foster conditions for sustainable economic development and employment, whilst stimulating innovation and growth for a modern low carbon economy.
11. Promote and enhance the culture and heritage of Wales.
12. Manage, use and enhance Wales' natural resources to support long-term well-being.
13. Facilitate high quality, responsive and better integrated public services, to those that need them most, enabling citizens to be an equal partner.
14. Position Wales as an internationally focused, ambitious country engaged and connected to the wider world.

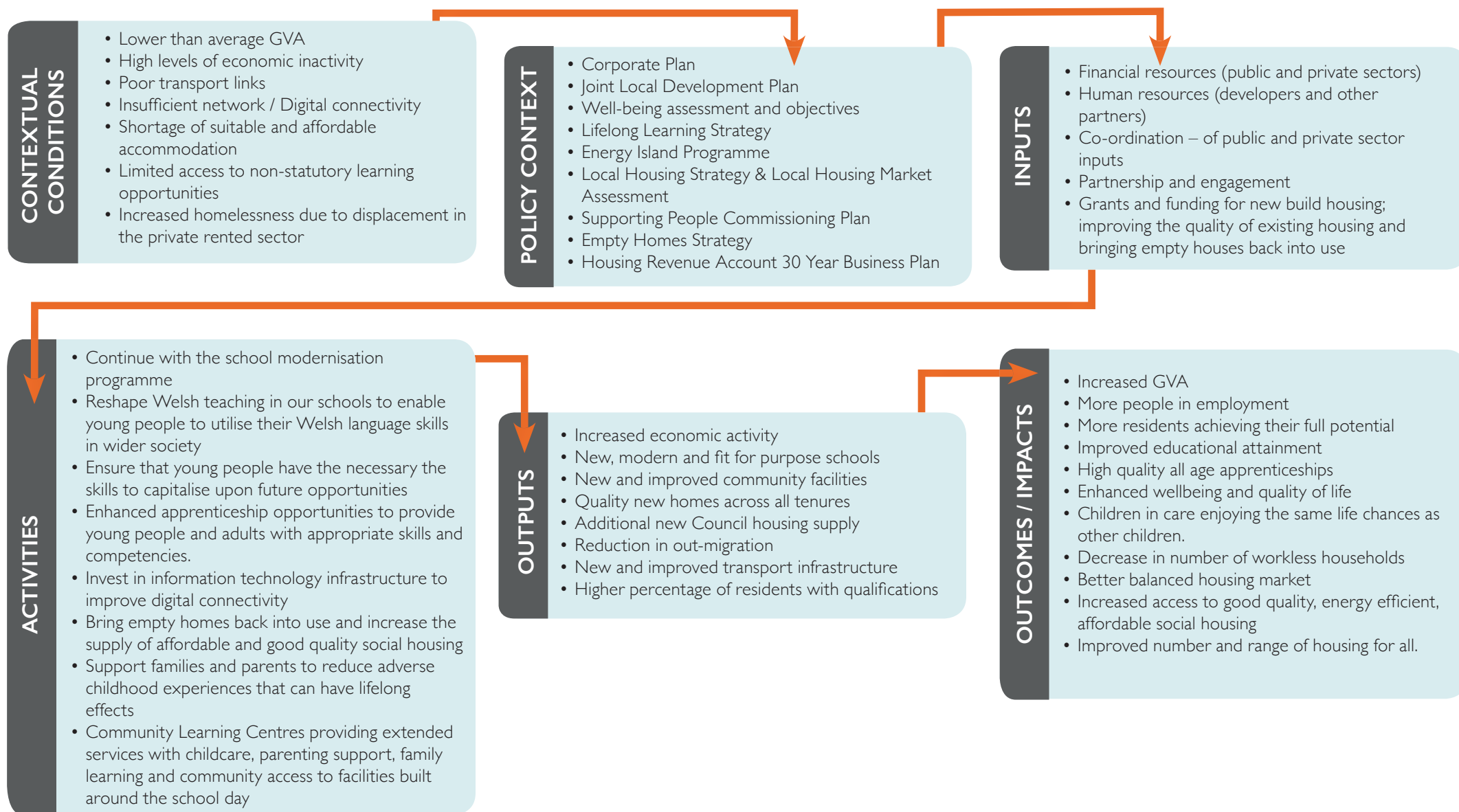
ENSURING RESIDENTS ARE HEALTHY, SAFE AND EQUAL LOGIC CHAIN

Anglesey currently has a lower than average GVA and a high level of economic inactivity. During the next decade the Island's economy will undergo a once in a lifetime transformation. This change will diversify the economy creating additional high-quality job opportunities thus providing young Anglesey residents with the opportunity to stay on the Island; attract previous leavers to return and support a higher quality of life.



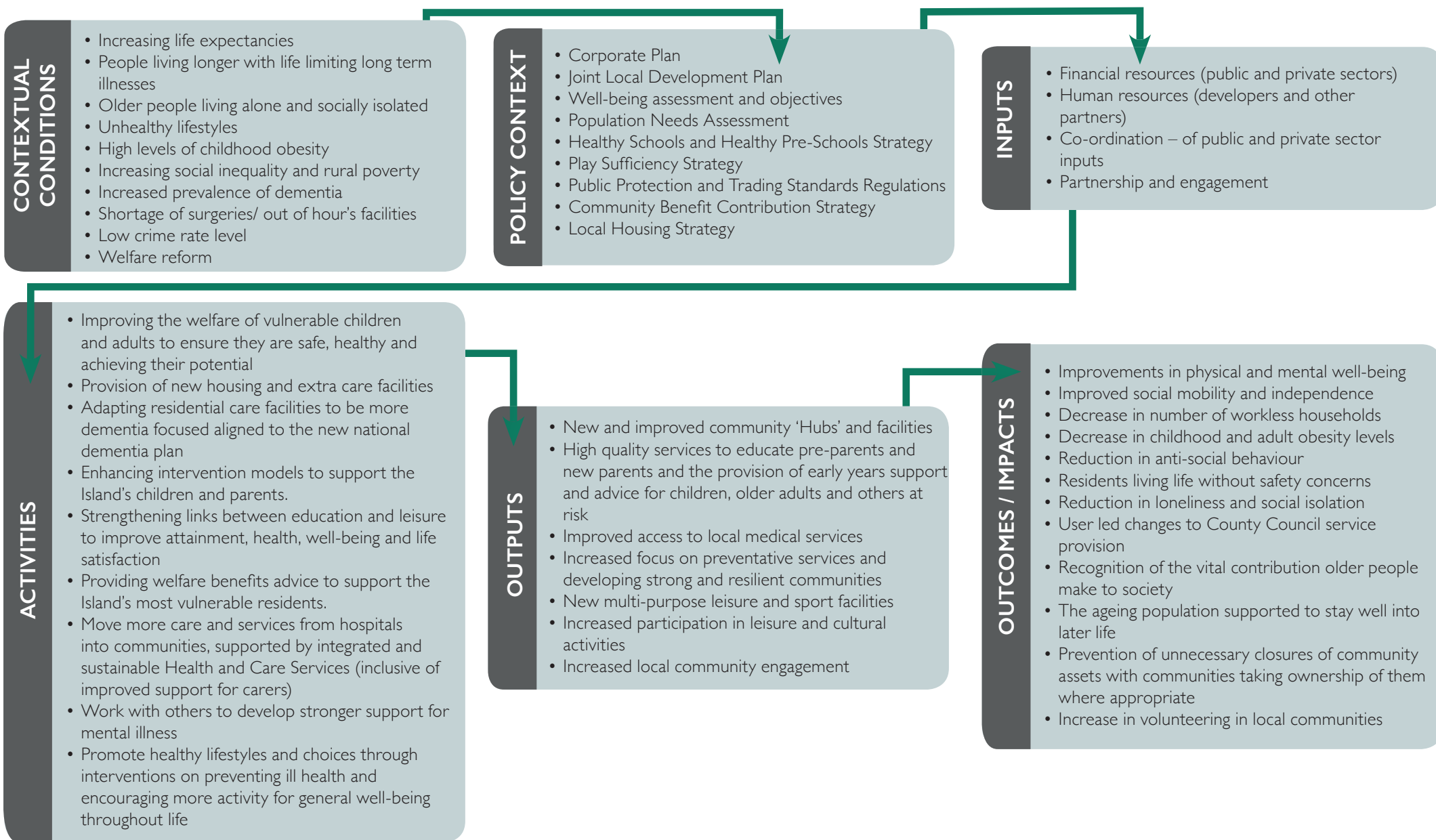
ENABLING RESIDENTS TO ACHIEVE THEIR FULL POTENTIAL LOGIC CHAIN

A more prosperous economy will act as a catalyst enabling residents to enhance their economic and life ambitions. Enabling residents to achieve their full potential is inevitably a combination of numerous factors such as employment, skills and training; the availability of quality and affordable housing and having access to a high-quality natural and built environment. Enabling residents to achieve their full potential and thrive requires that the right conditions are available for them to improve their quality of life and well-being.



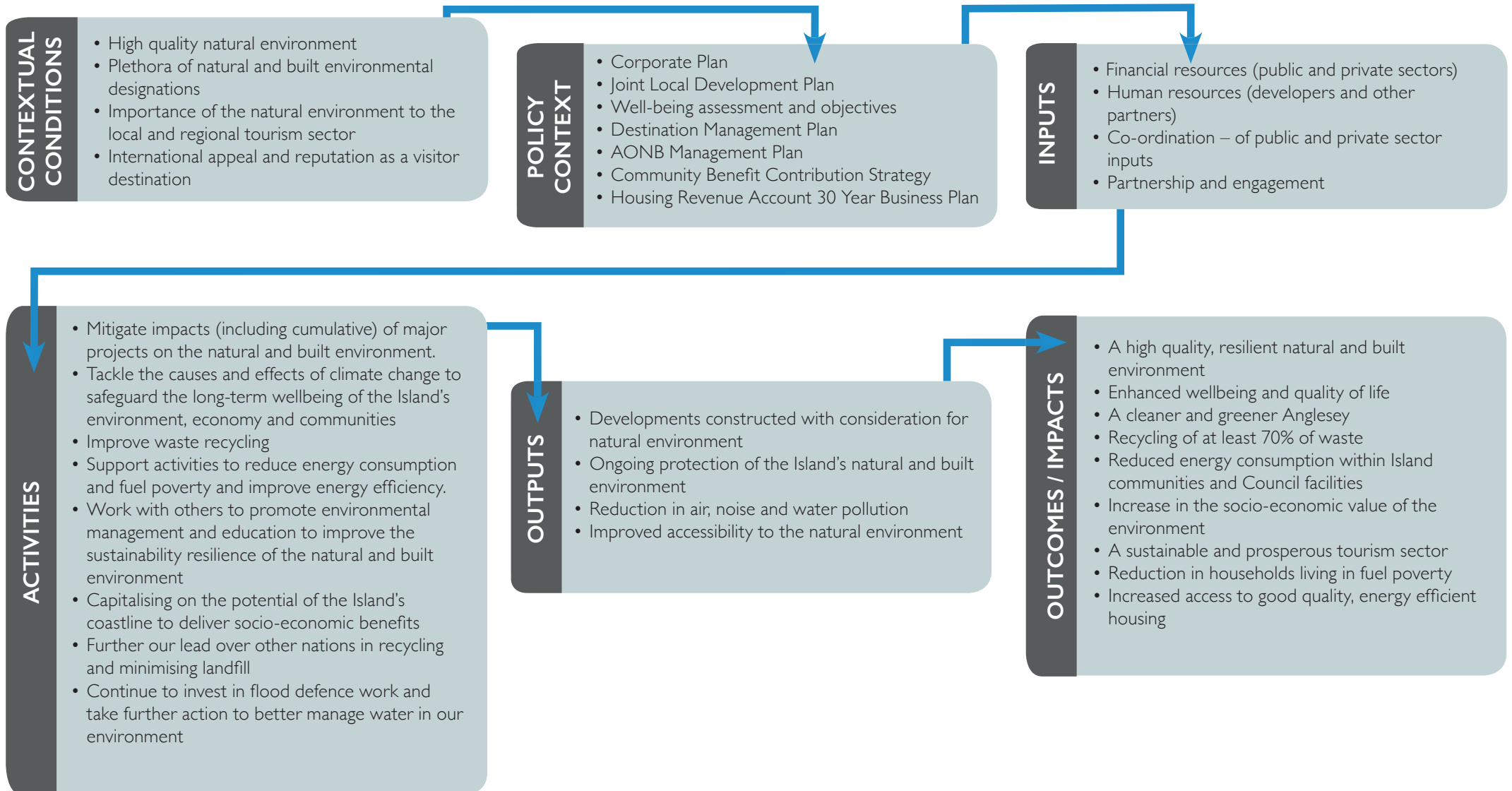
ENSURING RESIDENTS ARE HEALTHY, SAFE AND EQUAL LOGIC CHAIN

In order to reduce the impacts of rural peripherality, deprivation and social inequality, there exists a need to improve community cohesion and social mobility through providing quality and integrated services and facilities to support children, adults and other vulnerable groups.



PROTECTING AND ENHANCING THE NATURAL AND BUILT ENVIRONMENT LOGIC CHAIN

Anglesey has an international reputation as a result of its unique and high quality natural and built environments. It is imperative that these distinctive features are protected and enhanced when possible, as well as capitalising upon their value as socio-economic resources. The Island's natural and built environments are of critical importance to the tourism sector, supporting and sustaining the local and regional economy. The need to balance the potential impacts of the proposed major projects on the quality of the local environment will be challenging for developers, the County Council and other stakeholders.



MAINTAINING AND PROMOTING THE LANGUAGE AND CULTURE LOGIC CHAIN

Over two-thirds of the Island's population can read, write or speak Welsh (the second highest figure amongst Wales' Local Authorities). The Welsh language is integral to the cultural identity and heritage of the Island, and the clear ambition is to encourage and support more of the Island's communities and residents to use the language as part of their day to day lives.

